

LINCOLNSHIRE

Parts of KESTEVEN and HOLLAND

WITH DATES OF COMMENCEMENT OF REGISTERS FOR PARISHES FORMED BEFORE 1822

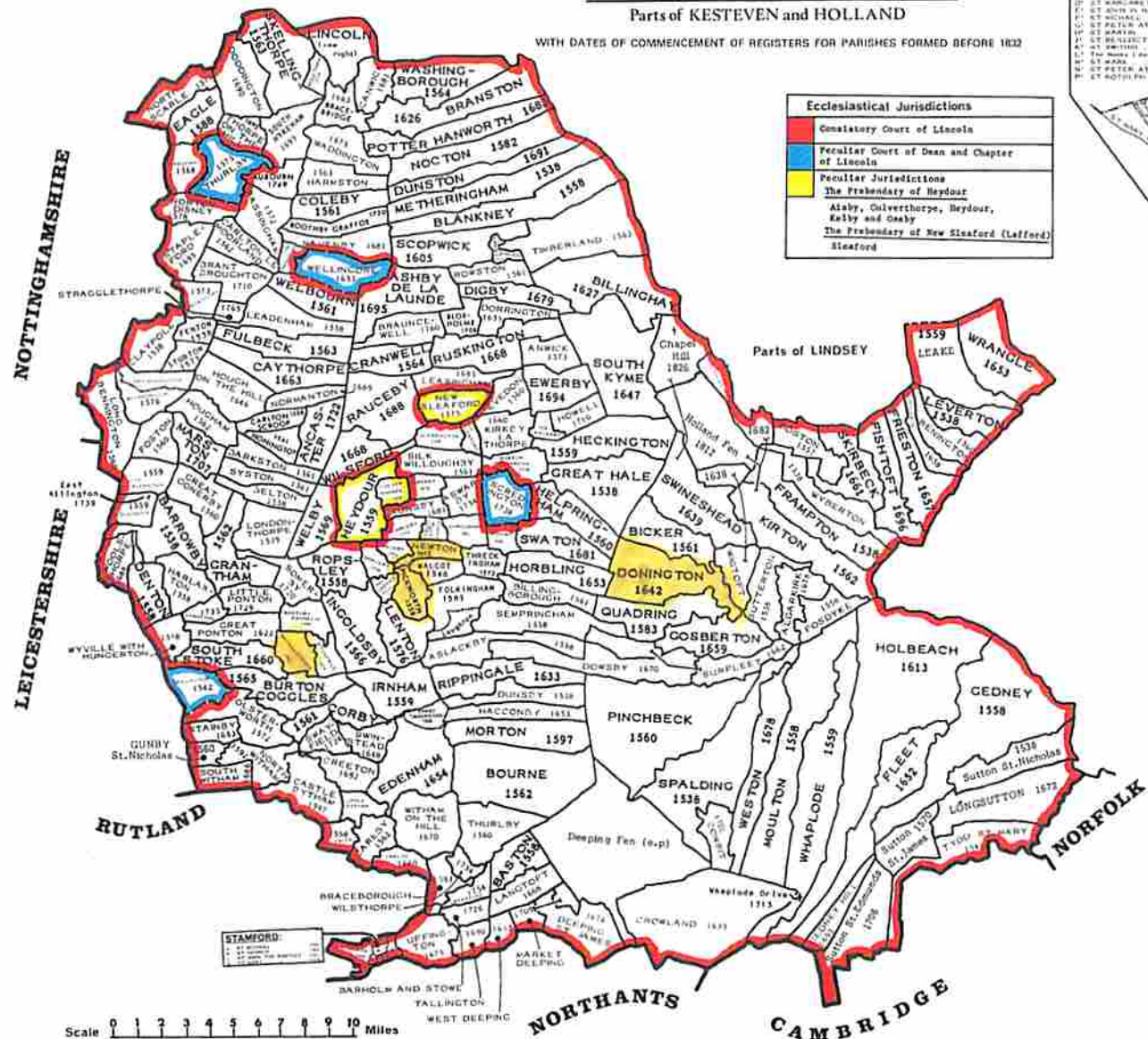
LINCOLN:

St. Peter in Eastgate	1662
St. Paul in the Walls	1662
St. Mary Magdalen in the Baa	1662
St. Andrew in the Close	1662
St. John in the Close	1662
St. Martin	1662
St. Peter in the East	1662
St. Peter in the West	1662
St. Peter in the East	1662
St. Peter in the West	1662
St. Peter in the East	1662
St. Peter in the West	1662
St. Peter in the East	1662
St. Peter in the West	1662



Ecclesiastical Jurisdictions

Constitutory Court of Lincoln
Peculiar Court of Dean and Chapter of Lincoln
Peculiar Jurisdictions
The Frabendary of Heydour
Alaby, Culverthorpe, Heydour, Killy and Oesly
The Frabendary of New Sixford (Lafford)
Sixford



STAMFORD:

St. Andrew	1662
St. Martin	1662
St. Peter	1662
St. Paul	1662

Scale 0 1 2 3 4 5 6 7 8 9 10 Miles

PUBLISHED BY THE INSTITUTE OF HERALDIC AND GENEALOGICAL STUDIES
 NORTHGATE, CANTERBURY ENGLAND © 1983
 THIS ITEM IS NUMBER 21B OF OUR SERIES OF GENEALOGICAL AIDS

Cecil Humphrey-Smith, ed., The
 Phillimore Atlas and Index of Parish
 Registers. (Phillimore & Co. LTD,
 Shopwyke Hall, Chichester, Sussex,
 England. 1984) Document 1-1

A B C D E F G H I J K L M

10
9
8
7
6
5
4